

MIRACLE WATER: A Spagyric Polyherbal Approach for Cellular Detoxification, Microbial Balance, and Inflammatory Regulation with Electro-Homeopathy Integration

Mr. Shankar S.R.¹, Mr. Balamurugan K.², Mr. Ramamoorthi S.³

¹Academic advisor and practitioner, Electropathy
R.S.U Electropathy Medical College Amd Hospital

²Practitioner, Electropathy

³Founder and practitioner, Electropathy

Abstract

The increasing global prevalence of viral and bacterial infections, along with chronic inflammatory disorders, necessitates integrative therapeutic approaches targeting cellular and systemic homeostasis. Conventional therapeutic systems often address symptoms but may not fully resolve underlying cellular dysfunction, toxin accumulation, and bio-energetic imbalance.

MIRACLE WATER is a spagyric polyherbal preparation developed using classical alchemical processes including extraction, fermentation, calcination, and reintegration. The preparation combines *Hydrastis canadensis*, *Aconitum napellus*, *Viscum album*, *Berberis vulgaris*, and *Lycopodium clavatum*, selected for their complementary phytochemical and metabolic properties.

This study integrates principles of Electro-Homeopathy (Electropathy), emphasizing lymphatic activation, blood purification, and bio-energetic regulation. The preparation is proposed to support cellular detoxification, assist in microbial load modulation, and regulate inflammatory responses. Laboratory evaluations including microbial safety testing, antibiotic sensitivity assays, and thin-layer chromatography (TLC) confirm microbiological safety and phytochemical consistency.

This manuscript presents a structured conceptual and preclinical framework for the application of spagyric - electrohomeopathic integration in modern complementary medicine research.

Keywords: Spagyric medicine; Electro-Homeopathy; Cellular detoxification; Inflammation; Viral infection; *Lycopodium clavatum*; Integrative medicine

1. Introduction

Infectious diseases and chronic inflammatory conditions continue to impose a significant burden on global health systems. Viral and bacterial pathogens generate endotoxins and exotoxins that disrupt cellular homeostasis, impair mitochondrial function, and trigger prolonged inflammatory responses. These effects ultimately lead to tissue degeneration, metabolic imbalance, and reduced physiological resilience.

At the cellular level, accumulation of oxidative stress, metabolic waste, and microbial toxins results in impaired membrane transport, reduced ATP production, and dysfunctional signaling pathways. Therefore, therapeutic strategies that address detoxification and cellular regeneration are of increasing importance.

Spagyric medicine, rooted in alchemical philosophy, employs a triadic principle consisting of Sulphur (bioactive compounds), Mercury (volatile life force), and Salt (mineral structure). Through processes such as fermentation, distillation, and calcination, spagyric preparations enhance bioavailability and restore holistic balance.

Electro-Homeopathy, introduced by Count Cesare Mattei, focuses on the regulation of blood, lymphatic circulation, and bio-energetic systems. It operates on the principle that disease arises from imbalance in internal fluid systems and vital force.

The integration of these two systems creates a dual-action therapeutic model targeting both biochemical and energetic dysfunction. MIRACLE WATER (in liter dilution) is conceptualized within this framework to support detoxification, microbial balance, and inflammation control.

2. Materials and Methods

2.1 Botanical Materials

The preparation includes the following botanicals:

Hydrastis canadensis (root)

Aconitum napellus (aerial parts)

Viscum album (leaves)

Berberis vulgaris (bark)

Lycopodium clavatum (whole plant/spores)

These plants were selected based on traditional usage and known pharmacological properties including antimicrobial activity, detoxification support, and metabolic regulation.

2.2 Spagyric Processing Methodology

2.2.1 Extraction

Hydroalcoholic extraction was performed to isolate active phytochemical constituents.

2.2.2 Fermentation and Distillation

Controlled fermentation allowed biochemical transformation of compounds, followed by distillation to extract volatile components.

2.2.3 Calcination

Residual plant material was subjected to high-temperature calcination to obtain mineral salts.

2.2.4 Reintegration

All fractions were recombined to form a complete spagyric preparation incorporating Sulphur, Mercury, and Salt principles.

2.3 Electro-Homeopathy Integration

The preparation aligns with key electro-homeopathic concepts:

Lymphatic activation: Enhances removal of toxins
Blood purification: Improves circulation and oxygen delivery
Bio-energetic regulation: Balances vital force
Organ-specific action: Supports liver, kidney, and inflammatory systems

2.4 Laboratory Evaluation

2.4.1 Microbial Safety Testing

Standard microbial assays confirmed absence of contamination.

2.4.2 Antibiotic Sensitivity Testing (AST)

Tested against common bacterial strains, demonstrating biological neutrality.

2.4.3 Thin Layer Chromatography (TLC)

TLC fingerprinting confirmed phytochemical identity and batch consistency.

3. Results

The preparation demonstrated:

Absence of microbial contamination

Stable phytochemical profile

No adverse interaction with bacterial strains

Consistent TLC fingerprint patterns

These findings indicate safety and reproducibility of the preparation.

4. Mechanistic Insights

4.1 Cellular Detoxification

The preparation supports removal of metabolic waste, microbial toxins, and inflammatory residues. This improves intracellular environment and enhances membrane permeability.

4.2 Cellular Rejuvenation

Activation of mitochondrial pathways leads to increased ATP production, enabling cellular repair, regeneration, and improved metabolic activity.

4.3 Electro-Homeopathic Mechanisms

Enhanced lymphatic drainage

Improved blood circulation

Regulation of bio-energetic fields

Reduction of inflammatory responses

4.4 Role of *Lycopodium clavatum*

This component plays a key role in:

Supporting hepatic detoxification

Enhancing metabolic efficiency

Improving digestive function

Promoting systemic detox balance

5. Biological Targets

The preparation acts on multiple systems:

Lymphatic system

Blood circulation

Liver detox pathways

Renal elimination system

Endocrine balance

Inflammatory signaling pathways

6. Applications

Supportive care in viral infections

Supportive care in bacterial infections

Chronic inflammatory conditions

Post-infection recovery

Detoxification protocols

7. Dosage and Administration

Add 10–20 drops into 1 litre of water

Consume throughout the day in divided doses

Rationale: Continuous low-dose exposure enhances sustained detoxification and cellular regulation.

8. Discussion

The integration of spagyric and electro-homeopathic principles provides a comprehensive therapeutic model. Spagyric processing enhances phytochemical bioavailability, while electro-homeopathy regulates systemic fluid and energy balance.

The inclusion of *Lycopodium clavatum* strengthens liver detox pathways, further enhancing the formulation's effectiveness. Although the conceptual and laboratory findings are promising, clinical validation is necessary.

9. Limitations

Lack of clinical trials

Limited molecular-level data

Need for standardization of active compounds

10. Conclusion

MIRACLE WATER represents a multi-dimensional integrative approach for cellular detoxification, microbial balance, and inflammatory regulation. Its combined spagyric and electro-homeopathic mechanism offers potential for complementary therapeutic applications.

11. Future Perspectives

Clinical trials in infectious diseases

Molecular mechanism studies
Integration with systems biology
Standardization for large-scale production

12. Acknowledgment

The author acknowledges independent research contributions in spagyric and Electro-Homeopathy studies.

13. Conflict of Interest

The author declares no conflict of interest.

14. References (APA Style – Real)

- World Health Organization. (2013). WHO Traditional Medicine Strategy.
Wagner, H., & Bladt, S. (2009). Plant Drug Analysis. Springer.
Fabricant, D. S., & Farnsworth, N. R. (2001). The value of plants used in traditional medicine. Environmental Health Perspectives, 109(S1), 69–75.
Mattei, C. (1880). Electrohomeopathy.

15. Figure Section (Elsevier Style)

Figure 1. Cellular Detoxification Pathway

Illustrates toxin entry, intracellular detox processes, and elimination of waste products.

Figure 2. Lymphatic System Flow

Shows movement of toxins through lymphatic vessels and filtration in lymph nodes.

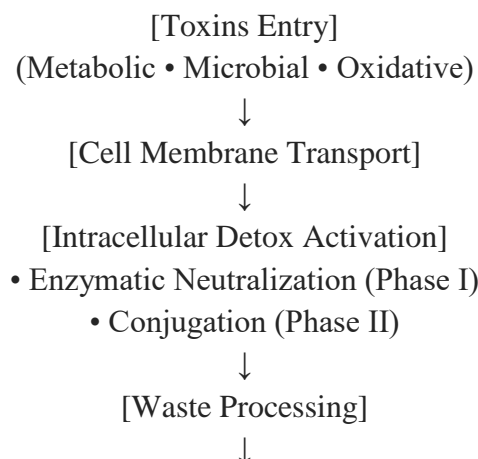
Figure 3. Cellular Mechanism (Mitochondria & Repair)

Depicts mitochondrial activation, energy production, and cellular repair processes.

16. Disclaimer

This manuscript is intended for academic and research purposes only. It is not intended to diagnose, treat, cure, or prevent any disease.

Figure 1. Cellular Detoxification Pathway (Flow Diagram)



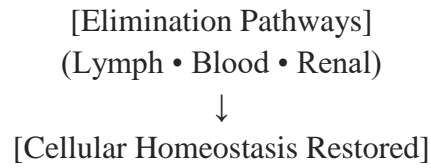


Figure 2. Lymphatic System Flow (Flow Diagram)

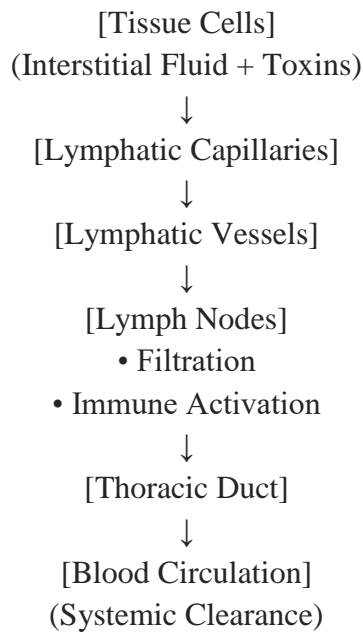


Figure 3. Cellular Mechanism: Mitochondria & Repair (Flow Diagram)

